

臺北/松山機場
TAIPEI/SONGSHAN AD

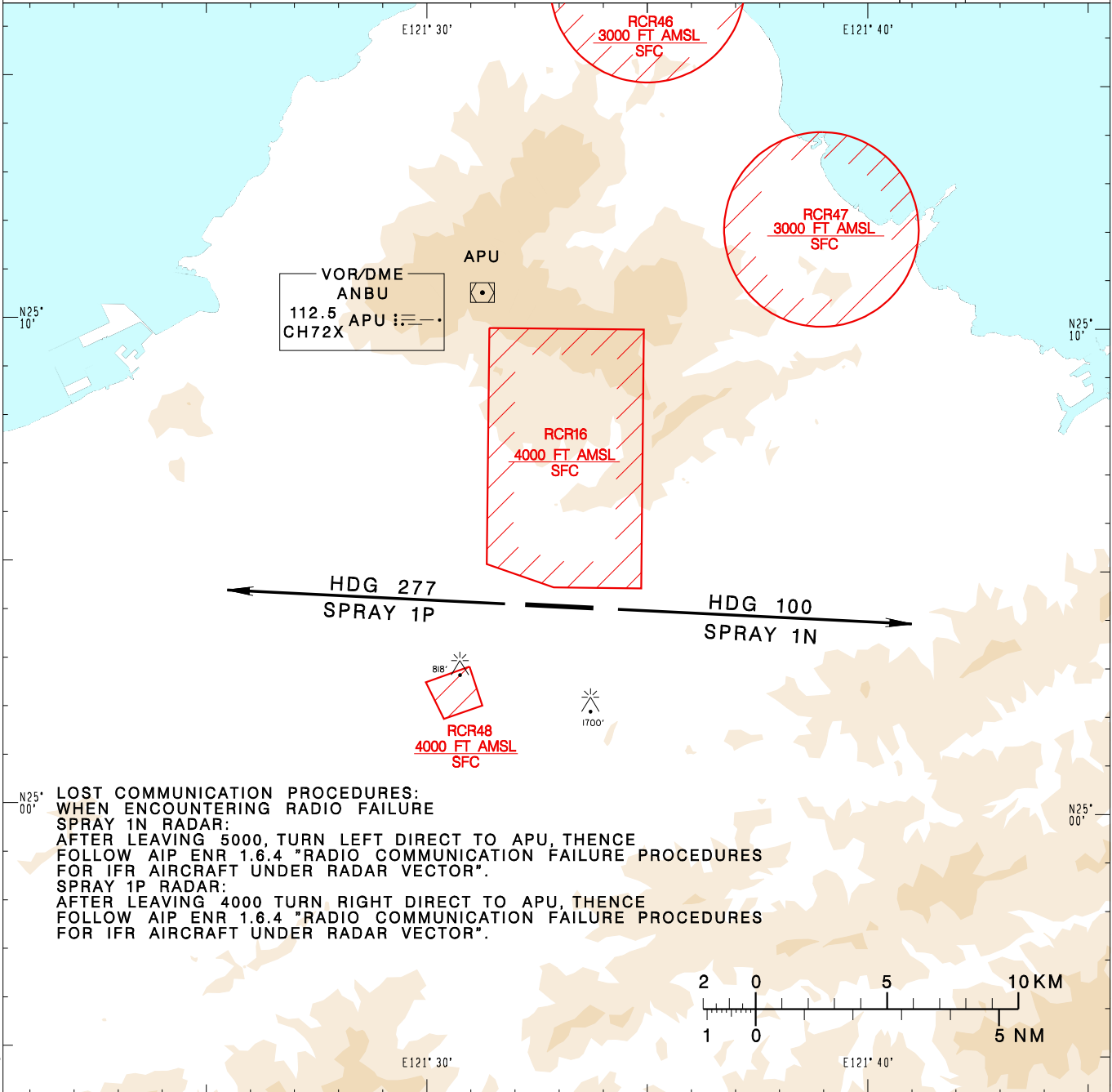
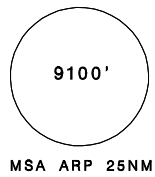
RCSS SID
SPRAY 1N RADAR(RWY10)
SPRAY 1P RADAR(RWY28)

TAIPEI APP 119.7 119.6 125.1	SONGSHAN TWR 118.1	ATIS 127.4 341
---------------------------------	-----------------------	-------------------

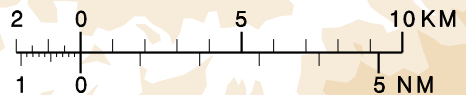
Apt Elev: 18' Trans Level: FL130 Trans Alt: 11,000'

BEARINGS ARE MAGNETIC; DISTANCES ARE NAUTICAL MILES; ELEVATIONS, HEIGHTS IN FEET

VAR 5° W-2022



LOST COMMUNICATION PROCEDURES:
 WHEN ENCOUNTERING RADIO FAILURE
SPRAY 1N RADAR:
 AFTER LEAVING 5000, TURN LEFT DIRECT TO APU, THENCE FOLLOW AIP ENR 1.6.4 "RADIO COMMUNICATION FAILURE PROCEDURES FOR IFR AIRCRAFT UNDER RADAR VECTOR".
SPRAY 1P RADAR:
 AFTER LEAVING 4000 TURN RIGHT DIRECT TO APU, THENCE FOLLOW AIP ENR 1.6.4 "RADIO COMMUNICATION FAILURE PROCEDURES FOR IFR AIRCRAFT UNDER RADAR VECTOR".



CHANGES: RECHART; MAG VAR AND TRACK.

SPRAY ONE NOVEMBER RADAR DEPARTURE
 Climb on HDG 100 to ATC assigned altitude for vectors to assigned route/fix.

SPRAY ONE PAPA RADAR DEPARTURE
 Climb on HDG 277 to ATC assigned altitude for vectors to assigned route/fix.

NOTE

1. SPRAY 1N RADAR:
Minimum climb gradient required: 7.0%(426ft/NM) until 4000ft.
2. SPRAY 1P RADAR:
Minimum climb gradient required: 7.4%(450ft/NM) until 4000ft.
3. Caution high terrain around airport.
4. A 1700ft-high BLDG at 2.1NM south of THR 28.
5. A 818ft-high BLDG at 2 NM SW of THR 10.